

IN  
SPA

written by Pa  
Hong Kong adaptatio  
directed by Ch



SHOU SON  
THEATRE

ARTS  
CENTRE

HK STAGE  
CLUB  
1982



CHRISTMAS  
PANTOMIME

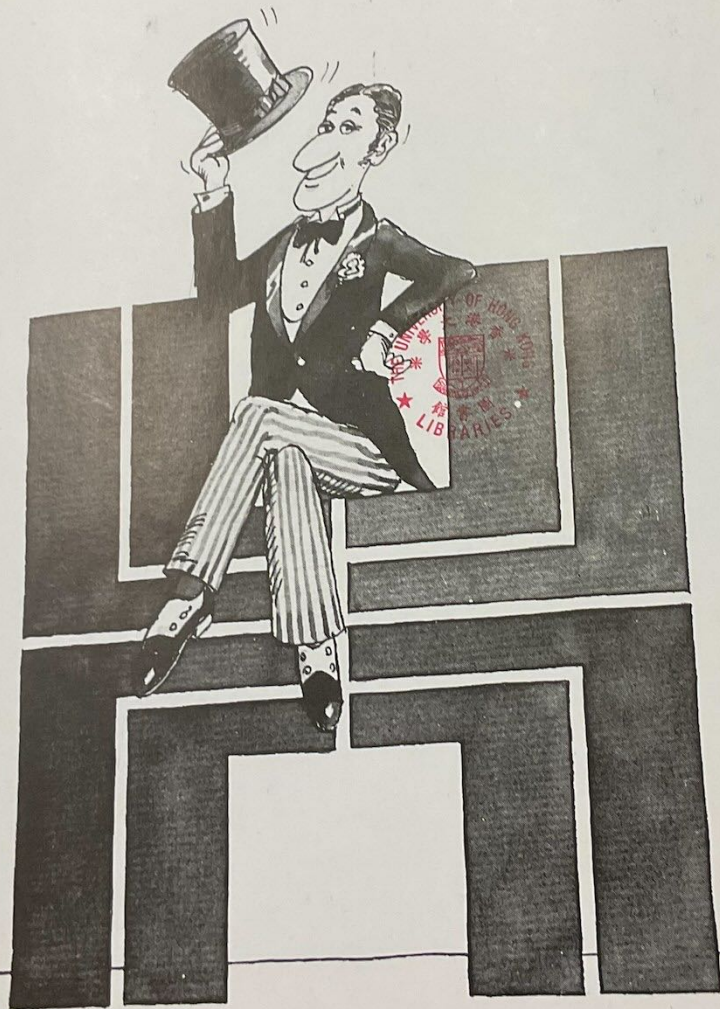
HKP  
792.3  
R63

theatre,  
ber, 13th  
th, 16th

The H



We're supporting you!

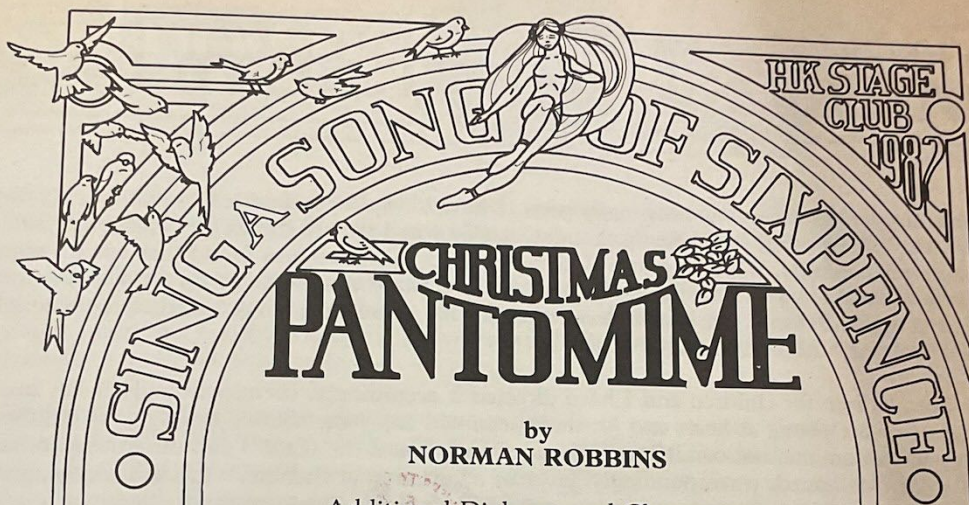


Hongkong Land



SPACE

written by Paul Reakes  
Hong Kong adaptation by Chris Baldwin  
directed by Chris Baldwin



HK STAGE  
CLUB  
1982

CHRISTMAS  
**PANTOMIME**

by  
**NORMAN ROBBINS**

Additional Dialogue and Characters

by  
MARIANNE CLEMENCE  
LINDA PEIFER

A Song and Some Lyrics  
by  
MARIANNE CLEMENCE

Musical Arrangements  
by  
TOBY MICKLETHWAIT

**7-18 DECEMBER, 1982**

All your favourite panto characters are drawn in the programme.  
Colour them in to remind you of the wonderful show.



## PRODUCER'S



## NOTES

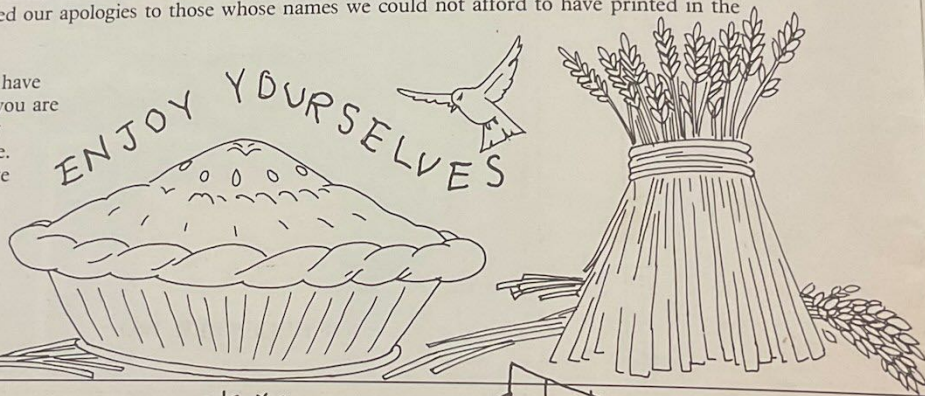
I must admit that for the past, I will not say how many years, I have always been puzzled by the nursery rhyme "Sing a Song of Sixpence". First of all I mistakenly thought that four and twenty meant 420 blackbirds and at age four that was stretching my credulity. It was not until I came to direct this show and found that having recruited a cast of some 500 it was impossible to fit 420 of them into the pie, I realized that it should be 24. Enlightenment even at this time of life can be quite exciting. The remainder of the plot has also now been revealed to me through the pantomime and now I look forward to revealing it to you.

This pantomime has been written for children and I have directed it accordingly, correspondingly it has been produced for the adults who are young at heart and for those who will enjoy themselves through the children. Involvement is the key to pantomime, not conditioned reactions and thus if the witch's evil intentions are recognized and evoke boing we will be delighted, correspondingly gasps of admiration at the fairy's graceful dancing will please us. Members of the audience, particularly young members who feel impelled to add to the dialogue or talk to the cast will have our support and should the response be hushed or produce a hesitant silence we know that we will have succeeded. Audience participation is therefore encouraged and parents should note.

Although I managed to reduce the cast following the problems with the size of the pie, there are behind the stage the remainder of those who unsuccessfully auditioned for blackbirds and they are flitting about providing the invaluable backstage service without which there would be no pantomime. We do have a problem with beaks being caught in the scenery fly ropes and have offered our apologies to those whose names we could not afford to have printed in the programme.

On page 10 of the programme I have inserted a competition in which you are expected to explain why so many blackbirds were put inside the pie. It is necessary for you to complete these answers so that I can reassure myself that I have got it right.

Marianne Clemence



Sing a song of sixpence a pocketful of nye  
Four and twenty blackbirds baked in a pie.

## MUSIC

In this year's  
which latter

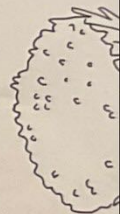
In a small co  
daily. When  
turns to dus  
recaptured a

The music  
some old fa  
J.S. Bach's  
rhymes. Es  
competitio  
Marianne

I would li  
for coach

In contra  
when I w  
confided  
pub pian

Toby M







# MUSICAL DIRECTOR'S



# NOTES

In this year's pantomime the story is, as usual, pretty much concealed beneath the dialogue, dance and music, for which latter I plead guilty. The story is however one with which we can all identify at this troubled time.

In a small country prosperity depends on a mysterious something which causes the quantity of gold to double daily. When that something ("the crown") is taken away by a wicked witch from a far off country the gold turns to dust and life peverages become valueless. However with help from the good fairy the crown is recaptured and money and honey flow again.

The music which regularly interrupts this plot has come mainly from two sources. Firstly some old favourite tunes: Tea For Two, Anything You Can Do, Sullivan's Tarantella, J.S. Bach's Minuet in G and Tchaikovsky's Dance of the Sugar Plum Fairy. Secondly nursery rhymes. Exactly how many is something you will have to determine if you want to win the competition and at least one of the tunes is carefully hidden! The witch's song was written by Marianne Clemence.

I would like to thank Susan Digby (well known for her madrigal group, the Swinging Digbyettes) for coaching the singers.

In contrast to Susan I remain strictly an amateur musician. My ambitions died when I was playing the piano in the Goat and Compasses in Woking and confided to a friend (now an ex-friend) "if ever I go blind I plan to become a pub pianist". He replied "and if I ever go deaf I will come to that pub."

Toby Micklethwait

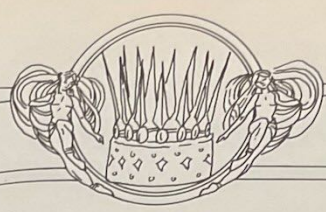
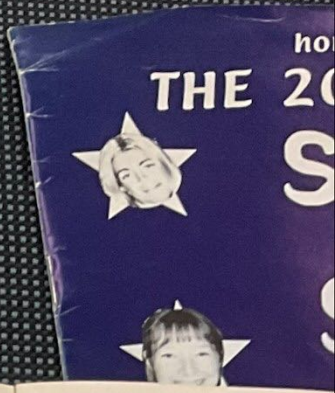


When the pie was opened the birds began to sing.  
 Wasn't that a dainty dish to set before the King.

792.095125  
 B11







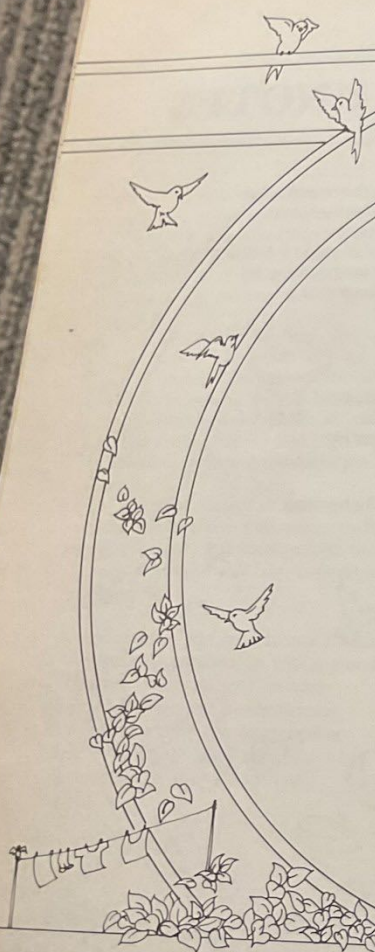
# MUSICAL

# SYNOPSIS

## ACT 1

Song	Sing a Song of Sixpence	Chorus
Song	I am the Palace Chamberlain	Chamberlain, Chorus
Song	Me for You	Valentine, Rosemary
Dance	Witch and Demon Dance	
Song	Dame Get Up and Bake Your Pie	Chorus
Song	Once I Caught a Man Alive	Dame, Valentine, Rosemary
Song	What Shall We Do with Queenie Dilly	King, Flip, Flop
Dance	Minuet	
Dance	Blackbird Dance	
Song	Oh Woe	Chorus

Reprise	Oh Woe
Song	Anything
Dance	Tarantell
Song	I'm as E
Song	Rudolph
Reprise	Sing a S



The king was in his counting house counting out his money.  
 The Queen was in the parlour eating bread and honey.



The maid



hong kong players Presents

# THE 2000 PANTOMIME



# SANTA IN SPACE



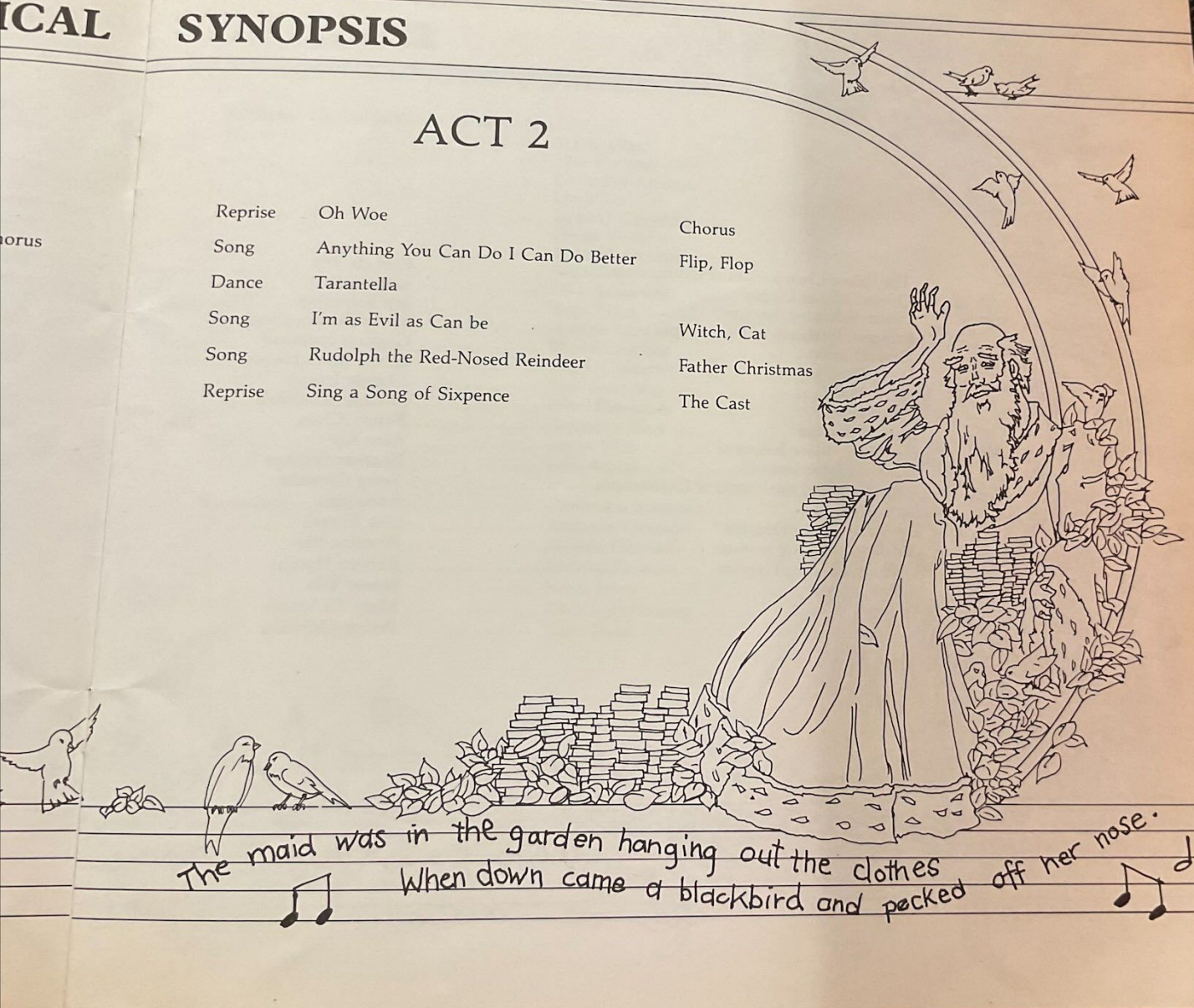
ICAL

## SYNOPSIS

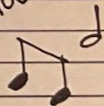
### ACT 2

- Reprise Oh Woe
- Song Anything You Can Do I Can Do Better
- Dance Tarantella
- Song I'm as Evil as Can be
- Song Rudolph the Red-Nosed Reindeer
- Reprise Sing a Song of Sixpence

- Chorus
- Flip, Flop
- Witch, Cat
- Father Christmas
- The Cast



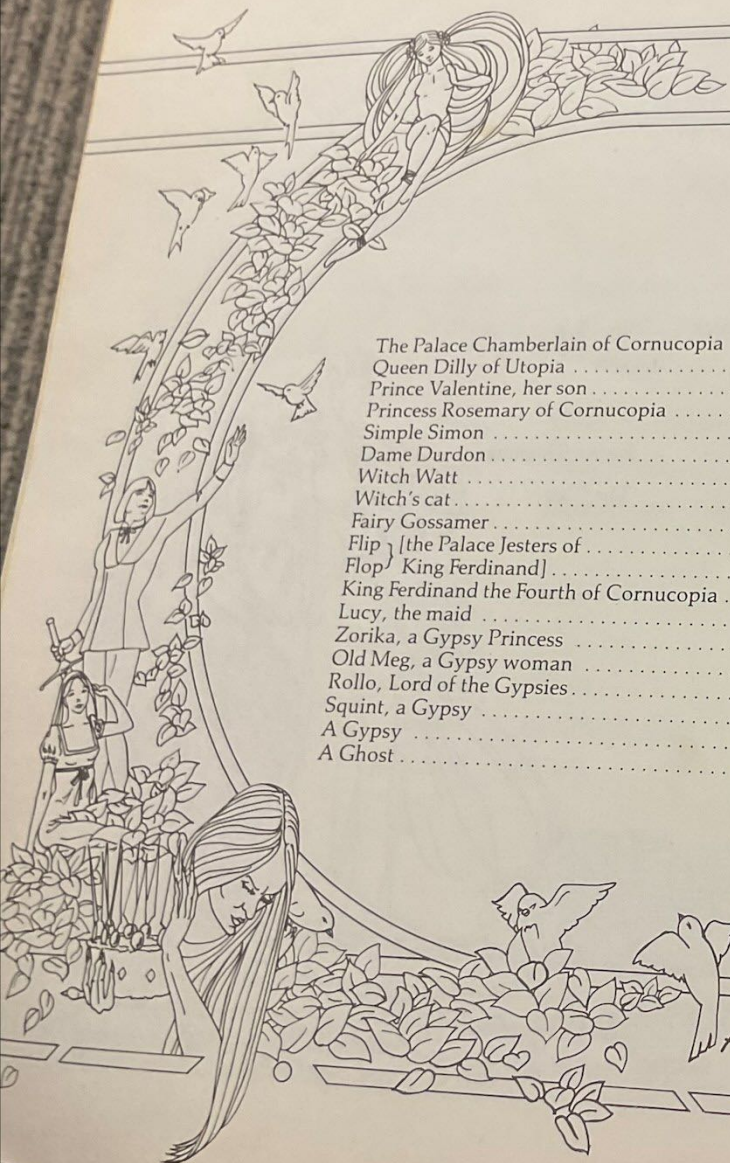
The maid was in the garden hanging out the clothes  
 When down came a blackbird and pecked off her nose.



192.095125  
B11







# DRAMATIS

# PERSON

The Palace Chamberlain of Cornucopia .....	Cees de Wit
Queen Dilly of Utopia .....	Judy Hassey
Prince Valentine, her son .....	Joy Behennah
Princess Rosemary of Cornucopia .....	Susan Burton-Clemence
Simple Simon .....	Graham Halstead
Dame Durdon .....	David Brian Hassey
Witch Watt .....	Maggie Jenvey
Witch's cat .....	Lindsay Goulding
Fairy Gossamer .....	Bonny Chan
Flip } [the Palace Jesters of .....	Aine Ko
Flop } King Ferdinand] .....	Heather Benians
King Ferdinand the Fourth of Cornucopia .....	Terry Coombs
Lucy, the maid .....	Fiona Jack
Zorika, a Gypsy Princess .....	Lisa Bryant
Old Meg, a Gypsy woman .....	Annette Van
Rollo, Lord of the Gypsies .....	Kelvyn Hymas
Squint, a Gypsy .....	James Vila
A Gypsy .....	Mark Goldsack
A Ghost .....	Penny Griffiths

Villagers, Cooks,  
Spirits etc. ....

Blackbirds .....

ANYONE CAUGHT TAKING PHOTOGRAPH



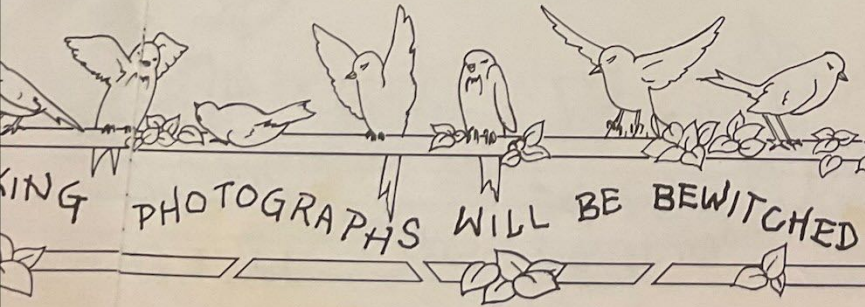
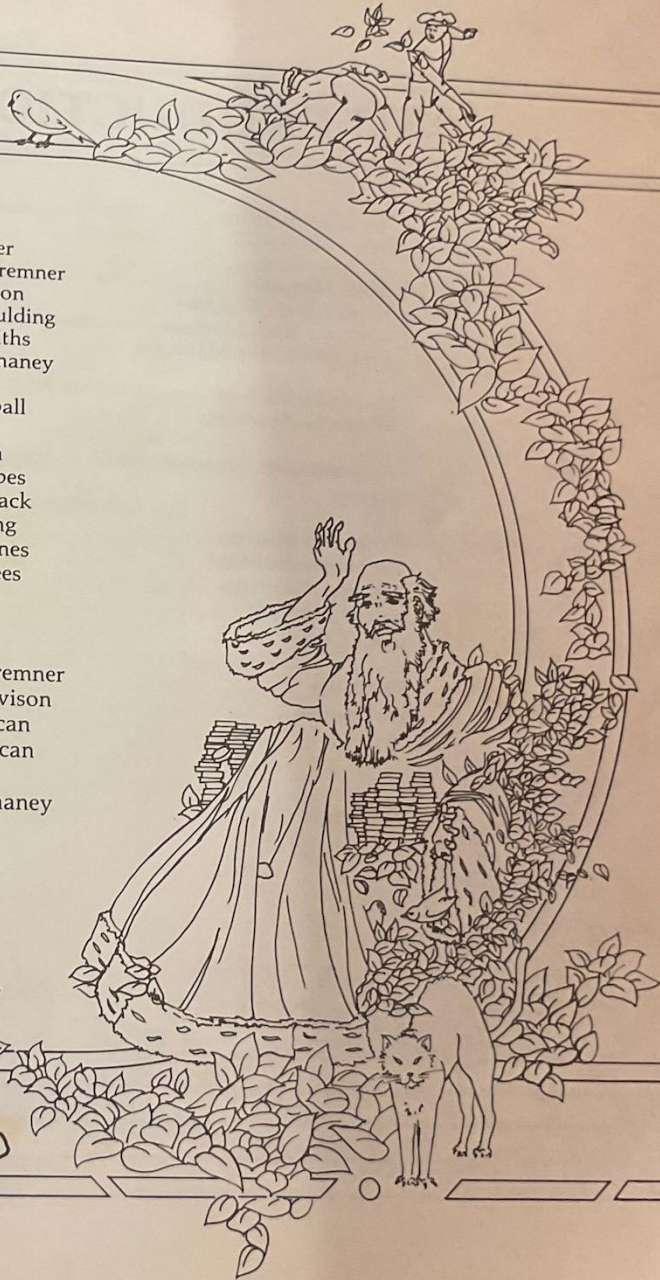


**MATIS**

**PERSONAE**

Villagers, Cooks, Guests, Gypsies,  
 Spirits etc. .... Trudi Allan  
 ..... June Bremner  
 ..... Catherine Bremner  
 ..... Linda Davison  
 ..... Lindsay Goulding  
 ..... Penny Griffiths  
 ..... Alva MacAnaney  
 ..... Irene Scott  
 ..... Ellen Snowball  
 ..... Kate Todd  
 ..... Annette Van  
 ..... David Combes  
 ..... Mark Goldsack  
 ..... Ken Goulding  
 ..... Peter Pitt-Jones  
 ..... Benjamin Rees  
 ..... James Vila  
 ..... John Walsh

Blackbirds ..... Catherine Bremner  
 ..... Amanda Davison  
 ..... Angela Duncan  
 ..... Melissa Duncan  
 ..... Noya Levy  
 ..... Alva MacAnaney  
 ..... Kate Todd



HKP  
 792.095125  
 B11

Programme





# PRODUCTION TEAM

Director/Producer ..... Marianne Clemence  
 Musical Director ..... Toby Micklethwait  
 Chorus Mistress ..... Susan Digby  
 Stage Manager ..... Eion Mitchell  
 Deputy Stage Manager ..... Mike Behennah  
 Assistant Stage Manager .....  
 Set Construction Managers ..... Dave Bootten  
 ..... Nick Clement-Jones  
 Wardrobe Mistress ..... Pam White  
 Wardrobe Assistants ..... Elizabeth Lowe

Assistant to the Director ..... Linda Peifer  
 Prompt ..... Hilary Driscoll,  
 ..... Valerie Heutschi  
 Properties Mistress ..... Ros Whitley  
 Properties Assistant ..... Ann Cheetham  
 Lighting Assistants .....  
 Sound Assistant .....  
 Stage Crew ..... John Spencer, (Paul Holmes)  
 ..... Sebastian Crewe  
 Fly Gaffer ..... Ian Fraser  
 Set Painters ..... Richard Rees  
 ..... Gail Clarke  
 ..... Susan Burton-Clemence  
 ..... Sandra Dakin  
 Set Dresser ..... Brenda Holmes

## DESIGN TEAM

Set (Design)

Set (Paint)

Lighting

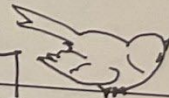
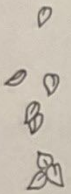
Costume

Choreography  
Mariann

Sound

Makeup

Makeup



Why a song of sixpence? Why a bag of rye?  
 Why were lots of blackbirds put inside the pie?





**DESIGN TEAM**

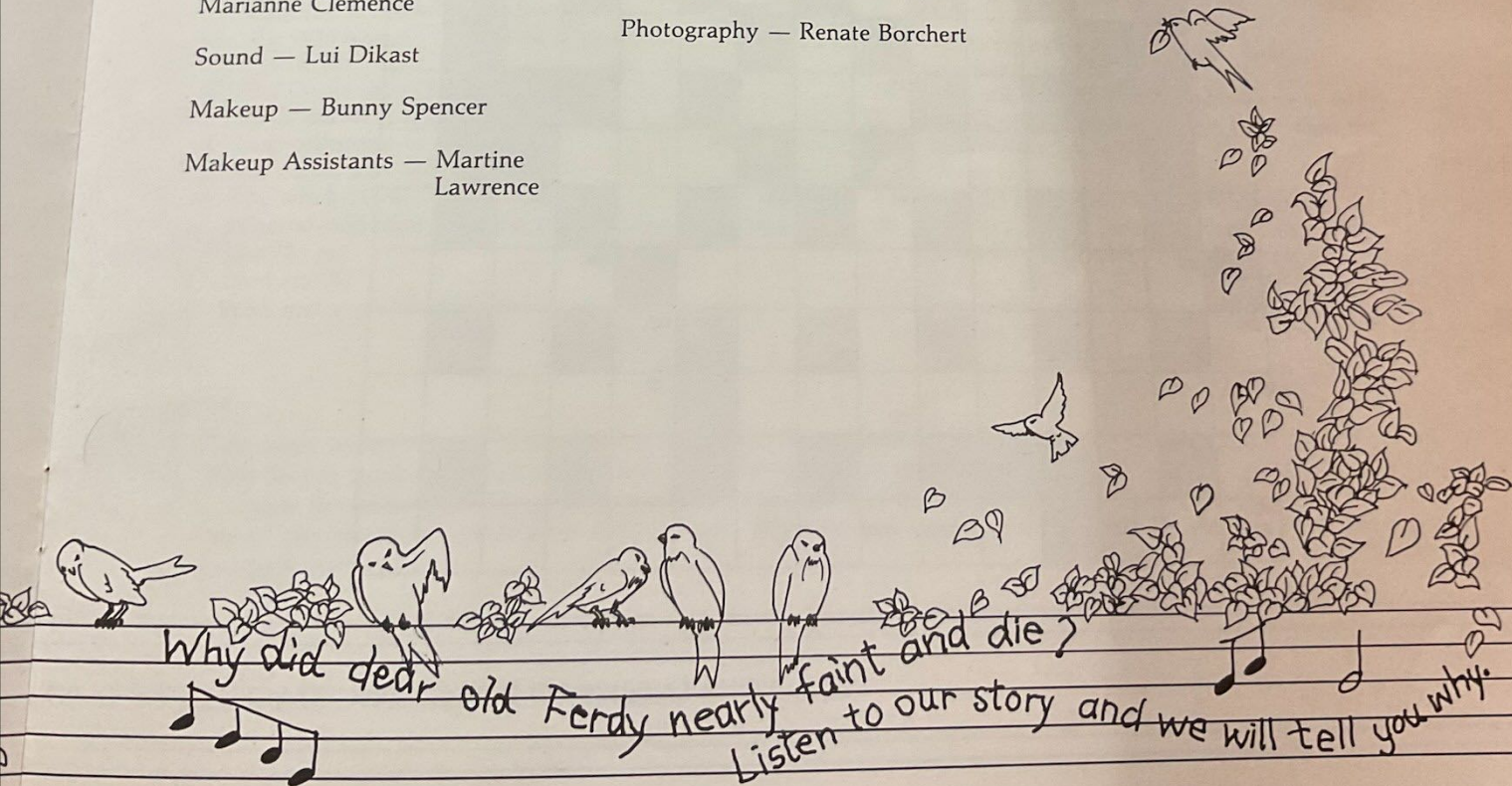
Set (Design) — Marianne Clemence  
 Set (Painting Design) — Richard Rees  
 Lighting (Design) — Bob Stevens  
 Costume (Design) — Cherry Conway  
 Choreography — Linda Walker  
 Marianne Clemence  
 Sound — Lui Dikast  
 Makeup — Bunny Spencer  
 Makeup Assistants — Martine Lawrence

**BUSINESS TEAM**

Business Manager — Derek Jennings  
 Publicity — Terry Coombs  
 Front of House Manager — Derek Jennings  
 Poster and Programme Cover — Graphia  
 Programme Design — Graphia  
 Photography — Renate Borchert

**MUSICIANS**

Piano — Susan Digby  
 Toby Micklethwait  
 Percussion — Uli Buchholtz



HKP  
 792.095125  
 B11

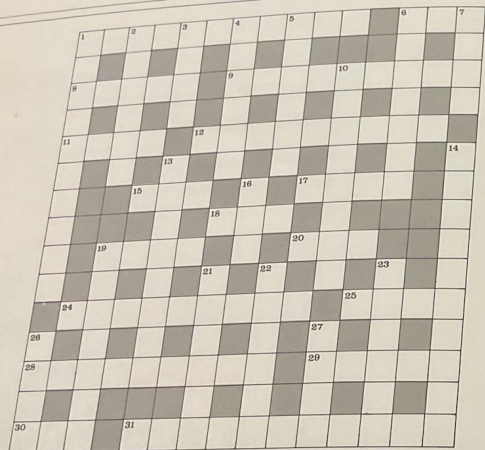
Programme







## PANTOMIME



## CROSSWORD

### CLUES: ACROSS

- The second most important man in Cornucopia (11)
- Help. The Dame says "I didn't know I'd lost it" (3)
- Lord of the Gypsies (5)
- One of the four and twenty (9)
- Dame Durdon and Queen Dilly are described as the \_\_\_\_\_ sisters (4)
- Baby ducks (9)
- The Chamberlain has a bad one but the Witch has not (3)
- Take the R out of skirt (4)
- The Witch says "I will bake a special \_\_\_\_\_". (3)
- Loathe (4)
- The Dame says "take me in your \_\_\_\_\_s and cover me with kisses". (3)
- Vast collection of gold (4, 5)
- She is too ugly (initials) (4)
- The witch (5, 4)
- What would Simple Simon's friend say if you met him (2, 3)
- Bonkers (3)
- Who met a pieman? (6, 5)

### CLUES: DOWN

- The King's Country (10)
- Everyone felt like this after they ate the enchanted pie (3, 3)
- Oh woe, oh what a \_\_\_\_\_ (4)
- What you'd have to do if you got this clue wrong (3, 3)
- A handkerchief (1, 5)
- A bar of gold (2, 5)
- Flip and Flop, at school (4)
- The Dame's are white with red hearts (8)
- What, of Queen Dilly's, were set in concrete? (3, 5)
- What's the name of the dame? (4, 6)
- How many pence? (3)
- The castle is this when the ghost moves in (7)
- Fairy Gossamer is always this even when the witch is very frightening (2, 4)
- Violent (6)
- How did Dilly describe the bridegroom? (6)
- Flip can \_\_\_\_\_ around Hong Kong with armbands on [In the song: Anything you can do] (4)
- They rhyme with flies but taste better with currants (4)

### QUIZ

- How many nursery rhyme tunes did you recognize? Name them.
- What do you think happened to Flip and Flop after they went into the oven?
- Complete the following: I liked the pantomime Sing a Song of Sixpence because . . . .
- One of the blackbirds pecked off Lucy's nose. What do you think the others did? By the way, who put Lucy's nose back on?

SEND YOUR ENTRIES TO HONG KONG STAGE CLUB, P.O. BOX 20290 HENNESSY ROAD, HONG KONG, AND WIN A PRIZE.







David Hassey  
DAME DURDON

Graham Halstead  
SIMPLE SIMON

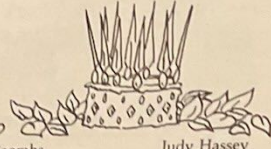
Margaret Jenvey  
WITCH WATT

Lindsay Goulding  
CAT



Susan Burton-Clemence  
PRINCESS ROSEMARY OF  
CORNUCOPIA

Joy Behennah  
PRINCE VALENTINE



Terry Coombs  
KING FERDINAND OF  
CORNUCOPIA

Judy Hassey  
QUEEN DILLY OF  
UTOPIA



Bonny Chan  
FAIRY GOSSAMER



James Vila  
SQUINT

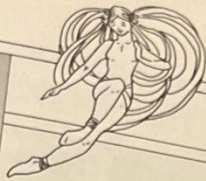




hong kong players Presents  
**THE 2000 PANTOMIME**  
**SANTA**  
 IN  
**SPACE**

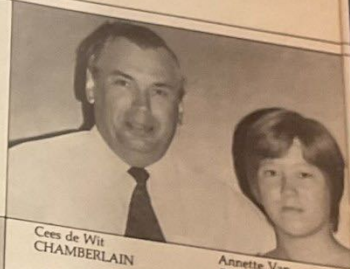


Lindsay Goulding  
 CAT



Bonny Chan  
 FAIRY GOSSAMER

Heather Benians  
 FLOP



Cees de Wit  
 CHAMBERLAIN

Annette Van  
 OLD MEG



James Vila  
 SQUINT



Fiona Jack  
 LUCY

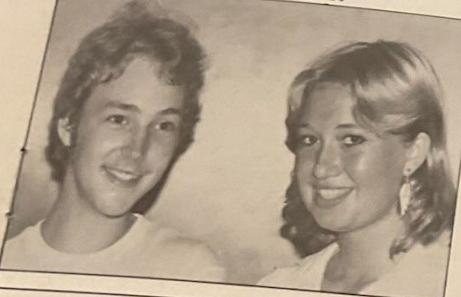


Aine Ko  
 FLIP



Lisa Bryant  
 ZORIKA

Kelvyn Hymas  
 ROLLO



HKP  
 792.095125  
 B11

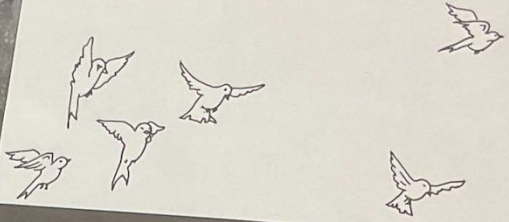
Programme



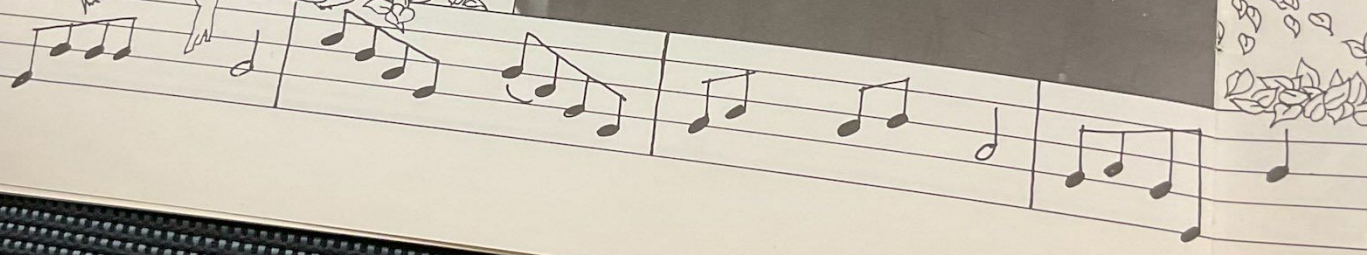




CHORUS



BLACKBIRDS





hong kong players Presents  
**THE 2000 PANTOMIME**



**SANTA**



IN

**SPACE**



## ACKNOWLEDGEMENTS

South China Morning Post

Hong Kong Standard

The Star

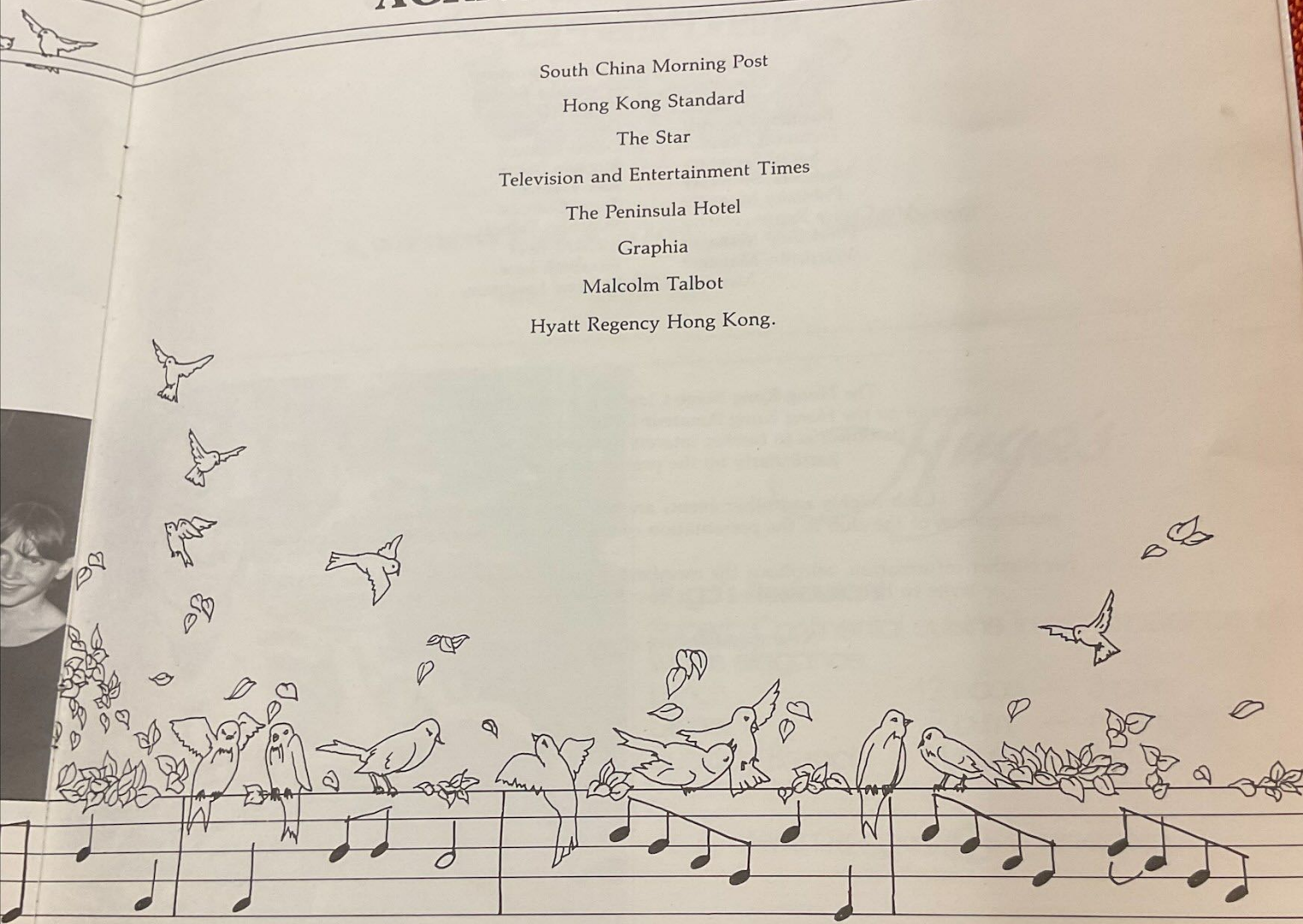
Television and Entertainment Times

The Peninsula Hotel

Graphia

Malcolm Talbot

Hyatt Regency Hong Kong.





## COMMITTEE MEMBERS

Chairman	Annabel Broxham
Secretary	Jacqueline Barden
Treasurer	Tom McDonough
Business Manager	Derek Jennings
Technical Director	David Bootten
Social Secretary	Stephan Spurr
Members' Secretary	June Hanna
Publicity Manager	Terry Coombs
Arts Centre Representative	Malcolm Talbot
Workshop Manager	Richard Rees
Wardrobe Manager	Elizabeth Low
Member	Martine Lawrence

The Hong Kong Stage Club was founded in 1946,  
successor to the Hong Kong Amateur Dramatic Club established in 1844.  
Its object is to further interest in drama in Hong Kong,  
particularly by the presentation of plays.

Club Nights and other events are held on a regular basis and  
participation of the club in the presentation of radio drama has recently been revived.

For further information, telephone the members' secretary, June Hanna (Home 5-737073)  
or write to her, addressed to P.O. Box 20290, Hennessy Rd., Hong Kong.

New members are always welcome



hong kong players Presents  
**THE 2000 PANTO**



51, GLOUCESTER ROAD, HONG KONG.

TEL.: 5-280182, 5-279907



## *Hugo's*

### Hugo's Restaurant

Superb Continental cuisine in an ambience of warm elegance.

Lunch	12 noon — 3 p.m.
Dinner	7 p.m. — midnight
Sunday Brunch	11 a.m. — 3 p.m.

HYATT REGENCY  HONG KONG

67 NATHAN ROAD  
KOWLOON, HONG KONG  
TELEPHONE: K-662321

HKP  
792.095125  
B11







# THE SPAGHETTI HOUSE

*"Home of the American Pizza"*

85 HENNESSY RD., WANCHAI, HONG KONG.  
TEL. 5-290901

ALSO AT

5 SHARP ST. EAST, CAUSEWAY BAY.  
(NEXT DOOR TO THE LEE THEATRE.)  
TEL. 5-7952245

3-B CAMERON ROAD, KOWLOON.  
TEL. 3-688635

HARBOUR CITY BRANCH OPENING SOON!

The Phoenix The  
December 13th,  
December 16th a  
December 17th a  
December 18th a



HKP  
792.095125  
B11



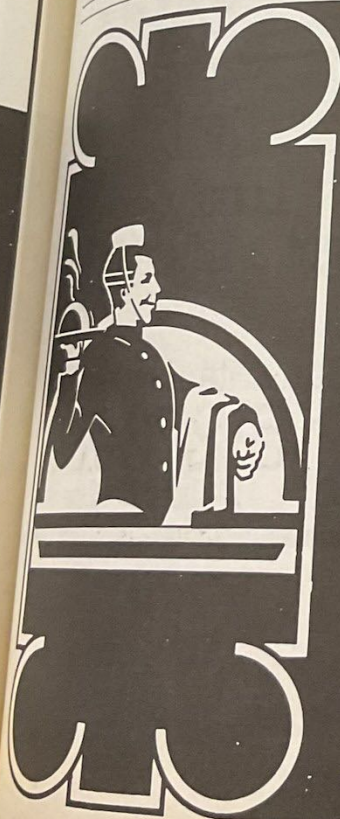
SEK KONG AMATEUR DRAMATIC SOCIETY  
**S K A D S**

Presents  
The Hong Kong Premier of  
"OLD FATHER TIME"

A Modern Pantomime  
by  
David Wood

The Phoenix Theatre, Sek Kong Village  
December 13th, 14th & 15th at 8 p.m.  
December 16th at 6 p.m.  
December 17th at 5 p.m.  
December 18th at 2 p.m. & 7 p.m.

Tickets, \$20 adults, \$10 children,  
can be booked by telephoning  
0-988750 or 0-9837164  
(Mon — Fri 9 a.m. — 4 p.m.)



Restaurant

257, Gloucester Road, Causeway Bay, Hong Kong  
Reservations: 5-7902901 or 5-7905867

*Best European Cuisine*  
*Good Wines*  
*Excellent Service*  
*Open 7 days a week*  
*For Lunch and Dinner*

*Jimmy's Kitchen*

Hong Kong: 1-3, Wyndham Street, Central 5-265293  
Kowloon: 1/Fl., Kowloon Centre, 29 Ashley Road, Tsimshatsui 3-684027

HKP  
792.095125  
B11

Programme





29400569  
12 OCT 2004

HKP 7923  
R63



THE  
GARRISON  
PLAYERS

WILL PRESENT

A PANTOMIME  
**ALI BABA**

SHOUSON THEATRE —  
HONG KONG ARTS CENTRE


JANUARY 4TH-8TH AND  
11TH-15TH AT 7.30 P.M.

INCLUDING  
TWO SATURDAY MATINEES  
AT 2.30 P.M.

TICKETS ON SALE



Lonely?  
You've got a friend in Sams.

The Samaritan befrienders.  
 **5-278484**  
24 hour Hot Line.

FE-MJ201

**ARTS FESTIVAL  
"FRINGE"**

A DOUBLE-HEADER "OF INFINITE JEST"  
COMPRISING

TWO GENTLEMEN OF SOHO  
BY  
A.P. HERBERT

AND

HARLEQUINADE  
BY  
TERENCE RATTIGAN

HONG KONG ARTS CENTRE RECITAL HALL,  
FEBRUARY 15TH-19TH, 1983.



hong kong players Presents  
**THE 2000 PANTOMIME**  
**SANTA**

**PAST PRODUCTIONS**

1946/47  
 Take it Easy  
 Androcles and the Lion  
 While the Sun Shines  
 Outward Bound  
 Heartbreak House  
 Rope  
 Present Laughter  
 Youth at the Helm

1947/48  
 Hay Fever  
 An Inspector Calls  
 Everyman  
 The Man who came to Dinner  
 Dangerous Corner  
 Things that Go Bump in the Night

1948/49  
 Blithe Spirit  
 Grand National Night  
 Treasure Island  
 The Guinea Pig  
 Twelfth Night  
 Quiet Week-end

1949/50  
 The Importance of Being Earnest  
 Duet for Two Hands  
 Tonight at 8:30  
 The Chiltern Hundreds  
 Gaslight

1950/51  
 Libel  
 Granite  
 The Wind and the Rain  
 Thunder Rock

1951/52  
 French Without Tears  
 The School For Scandal  
 Castle in the Air  
 The Paragon  
 The Happiest Days of Your Life

1952/53  
 Young Wives' Tale  
 The Holly and the Ivy  
 She Stoops to Conquer  
 Ladies in Retirement  
 Present Laughter

1953/54  
 Miranda  
 The Late Edwina Black  
 The Lady's not for Burning  
 Tartuffe

1954/55  
 The Flashing Stream  
 Dear Charles  
 Time and the Conways  
 The Rivals

1955/56  
 Dial M for Murder  
 The Miser  
 Othello

1956/57  
 Book of the Month  
 Arms and the Man  
 Winslow Boy

1957/58  
 A Midsummer Night's Dream  
 The Magistrate  
 Antigone & Phoenix  
 Too Frequent  
 Bell, Book and Candle

1958/59  
 The Devil's Disciple  
 Tobias and the Angel  
 Crime Passionnel  
 Romanoff and Juliet

1959/60  
 Ring Round the Moon  
 The Strong are Lonely  
 The Prodigious Snob

1960/61  
 The Taming of the Shrew  
 The Fifth Formers' Dream  
 Breath of Spring

1961/62  
 Simon and Laura  
 Five Finger Exercise  
 It's a School Cert.  
 The House by the Lake  
 The Love of Four Colonels

1962/63  
 The Rape of the Belt  
 Epitaph for George Dillon  
 Hans, The Witch and the Goblin  
 A Man for all Seasons

1963/64  
 Murder Mistaken  
 The Sleeping Prince  
 The Snow Queen  
 Twelfth Night\*  
 Sailor Beware

1964/65  
 The Importance of Being Earnest  
 The Private Ear and Public Eye  
 A Sleep of Prisoners  
 Antigone & The Dock Brief

1965/66  
 The Brides of March  
 Aladdin\*  
 Thieves Carnival  
 Luller

1966/67  
 Summer of the Seventeenth Doll  
 Cinderella\*  
 The Little Foxes  
 Out of the Crocodile

1967/68  
 Here We Come Gathering  
 Jack and The Beanstalk\*  
 The Queen and The Rebels

1968/69  
 Dirty Work at the Crossroads  
 She Stoops to Conquer  
 Wait Until Dark

1969/70  
 Boeing Boeing  
 Present Laughter  
 Old Mother Hubbard\*  
 Pygmalion  
 Say Who You Are

1970/71  
 Next Time I'll Sing to You  
 Sleeping Beauty\*  
 The School for Scandal  
 Signpost to Murder

1971/72  
 The Killing of Sister George  
 When We Are Married  
 Dick Whittington\*  
 Tartuffe  
 The Caretaker

1972/73  
 Arms and the Man\*  
 Aladdin\*  
 Lion in Winter

1973/74  
 Hay Fever  
 Winter's Tale\*  
 Cinderella\*  
 The Devil's Disciple

1974/75  
 Conduct Unbecoming  
 Sindbad the Sailor\*  
 The Philanthropist  
 Mill Hill

1975/76  
 Private Lives  
 Plotters of Cabbage Patch Corner\*  
 Rosencrantz and Guildenstern Are Dead

1976/77  
 An Enemy of The People  
 Puss in Boots\*  
 How The Other Half Loves

1977/78  
 The Importance of Being Earnest  
 Bequest to the Nation\*  
 Robin de Hood  
 Blithe Spirit

1978/79  
 The Taming of the Shrew  
 The Wizard of Oz\*  
 Words and all that Jazz  
 Equus

1979/80  
 Vivat! Vivat Reginal  
 A Turn for the Verse  
 R.U.R. (radio)  
 The National Health

1980/81  
 Deathtrap  
 Habeas Corpus  
 84 Charing Cross Road  
 Enter a Free Man

1981/82  
 Table Manners  
 Babes in the Wood  
 Colored Girls  
 A Day In The Death Of Joe Egg.  
 Richard III

\*With Garrison Players

Designed and Produced by Graphia

HKP  
 792.095125  
 B11

Programme





Innovation in banking since 1865



**Hongkong Bank**  
The Hongkong and Shanghai Banking Corporation



3

